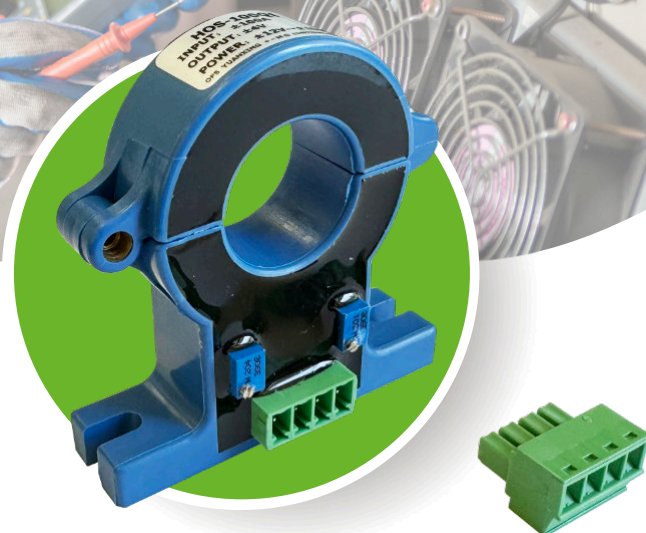


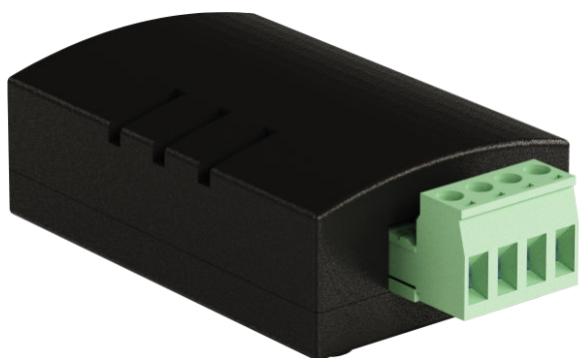
# HOS-100Q1 DC Current Sensor & VT406 DC Current Converter

- DC Current Monitoring
- Energy Management
- $\pm 100\text{A}$ , DC

The **HOS-100Q1** is a simple open-loop DC transducer capable of measuring DC currents in the range of  $\pm 100\text{A}$ . It is designed for applications where accurate current measurement is critical, such as power monitoring and energy management systems.



The **VT406 / DC current transceiver** bridges the measured data from the HOS-100Q1 transducer to the Vutlan monitoring system. This setup allows for real-time monitoring and analysis of current flow, ensuring that any irregularities in the system are detected early, which is crucial for the protection and stability of electrical systems.



## HOS-100Q1 DC current sensor

Measured current	$\pm 100\text{A}$ , DC
Max. isolation voltage	2kV
Max. cable diameter	10 mm
Operating temperature	From $-10^{\circ}\text{C}$ to $+80^{\circ}\text{C}$
Operating humidity	5% - 95% (Non-Condensing)

## VT406 DC Current Converter

Type	Analog sensor, converter, adapter
Output	x1 RJ11 6P4C
Power	12 V, 1A
HS Code, GTIN	90303370, 8588009886563



**VUTLAN**  
**SOLUTIONS**  
[www.vutlan.com](http://www.vutlan.com)