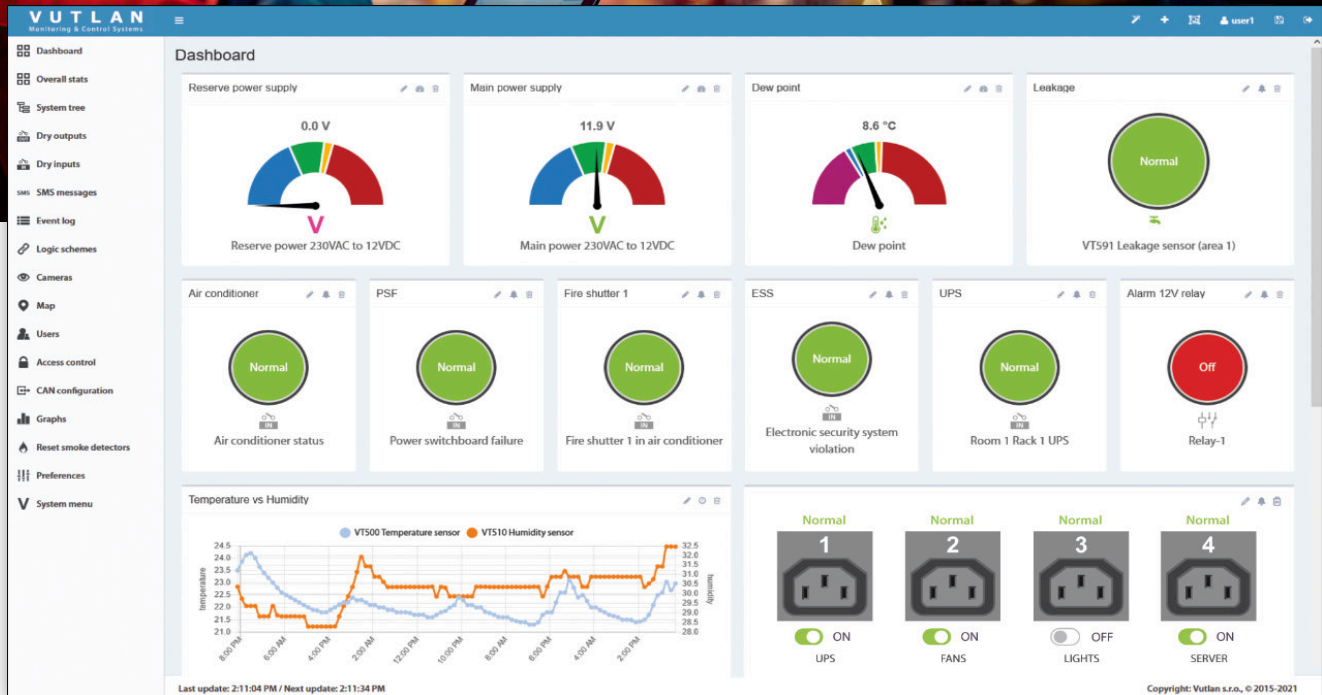


# Vutlan Web Interface



The **Vutlan web interface** provides users with a powerful and intuitive platform to manage and monitor a wide range of devices, sensors, and environmental systems. It's designed for ease of use while offering advanced features for real-time control and automation.

## Key Features:

- **Dashboard Overview:** Users can monitor live data from connected sensors and devices, providing instant visibility into environmental conditions, power systems, and other critical parameters.
- **Customizable Alerts and Notifications:** Alarms can be configured to trigger notifications via email or SMS, enabling timely responses to system events or failures.
- **Logical Schemes:** The interface allows users to create logical automation schemes to automate actions based on specific triggers (e.g., shutting down devices if temperature exceeds a threshold).
- **Historical Data & Logs:** Access detailed logs of events and sensor data, helping with system audits, performance analysis, and troubleshooting.
- **Multi-User Access:** Provides different permission levels for multiple users, ensuring secure and organized management across teams.
- **Remote Management:** The web interface is accessible remotely, enabling users to manage and monitor systems from anywhere.